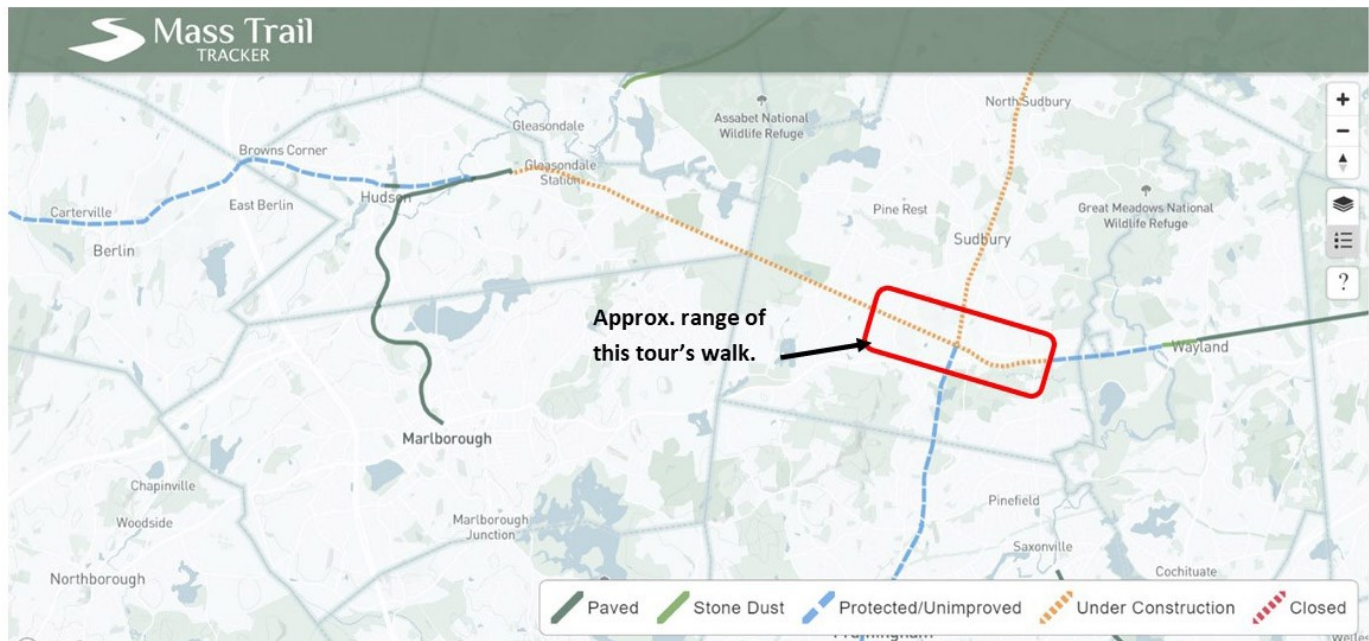


TOUR 5 Mass Central Rail Trail — Walking tour of the South Sudbury section of the Mass Central Rail Trail – Sudbury to Hudson Project

SHORT TOUR LAYOUT. Start location: South Sudbury Station Site / Diamond Crossing, approximately 33 Union Avenue, Sudbury.
Total walk 1.5 miles ±. 2 hours.



The MCRT-Sudbury to Hudson Project is a 7.5 mile rail trail project being constructed in partnership between Eversource Energy, DCR and the towns of Sudbury and Hudson. This tour will walk a 1.5 + - section of this project around the South Sudbury area. The tour will highlight various historic railroad sites on the corridor, including the diamond crossing, South Sudbury Station, the Section Tool House, Bridge 127, and other features. The group may discuss the design and permitting process for this project, DCR rail trail design standards, and efforts to protect, highlight and interpret historic railroad features.



Tour leader bio.

Paul Jahnige has been a trail planner with the Massachusetts Department of Conservation and Recreation (DCR) for over 20 years. In that role, he focusses on planning, repairing and enhancing DCR's natural surface, woodland trail systems. But also manages a number of DCR's shared use pathway, rail trail and greenway restoration and construction projects, including the Mass Central Rail Trail Sudbury to Hudson Project, a partnership with Eversource Energy and the communities. In his spare time, Paul chairs his local trails committee, coaches and enjoys the commonwealth's many wonderful trail systems.



For any questions about these tours, please contact
Craig Della Penna 413 575 2277 CraigDP413@gmail.com

